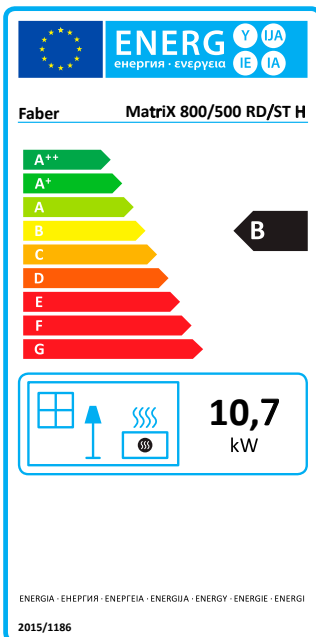
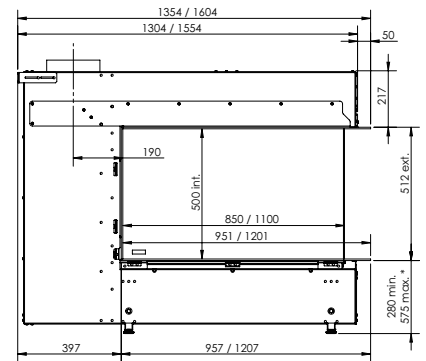
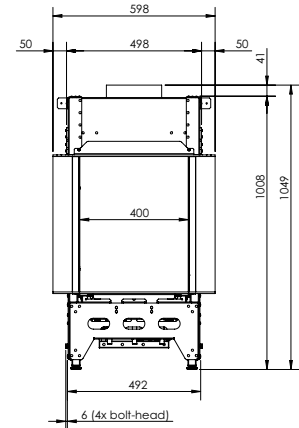
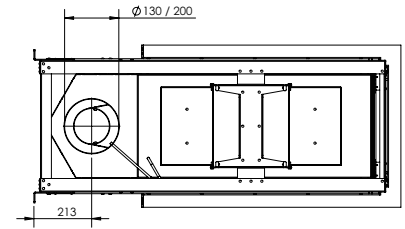


MatriX | 800/500 RD



Specifications MatriX 800/500 RD

Type	Built-in
Model	Room divider
Exterior dimensions WxHxD in mm	1354 x1049 x 598
Fire display WxHxD in mm	850 x 500 x 400
System	Log Burner. 3.0
Decoration	Log set
Back walls	Smooth steel
Remote	ITC remote
Power (kW)	10,7 kW
Operating system	Honeywell
Energy label	B

OPTIONS

- Glass back wall black
- Anti-reflective glass
- Hybrid Pro Light (HPL) Module
- Wall bracket
- Depth frame 50 mm
- ITC control
- Adjustable legs

For more information, please take a look at the website

www.faberfires.com

There is **so much to tell...**